



Quality First For Performance That Lasts

CVS102XL

Quick Installation Guide

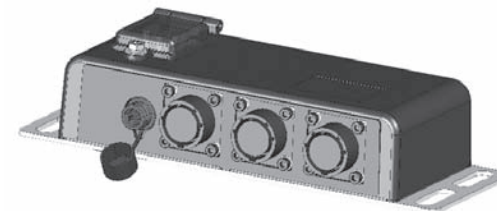
Included in the box:

- 1 - CVS102XL Controller
- 1 - CVDC6MA Display to Controller Cable
- 1 - CVS100P3M Power Harness

1 Determine a secure mounting location for the controller. The CVS102XL is waterproof and can be mounted on the vehicle's exterior in a vertical or horizontal position. The controller can be mounted away from the display as long as it remains within the range of the CVDC6MA (six meter display to controller cable).

Warning: The orientation of the image displayed is critical to safe vehicle operation. An object on the right side of your vehicle needs to be seen on the right side of the display screen. Always confirm proper image orientation before driving or operating your vehicle.

Note: All cables provided are intended to be installed in only one direction. The cables are labeled as to direction (Front or Rear) or component they plug in to. Connections are made by either aligning the alignment marks on the connector or by aligning the connector keys.



2 Controller Connections

The controller connections are labeled according to their function:

DISPLAY – Use the CVDC6MA to connect the controller to the display.

EXT CAMERA - Car Vision camera input.

CAMERA - Car Vision camera input (rear camera).

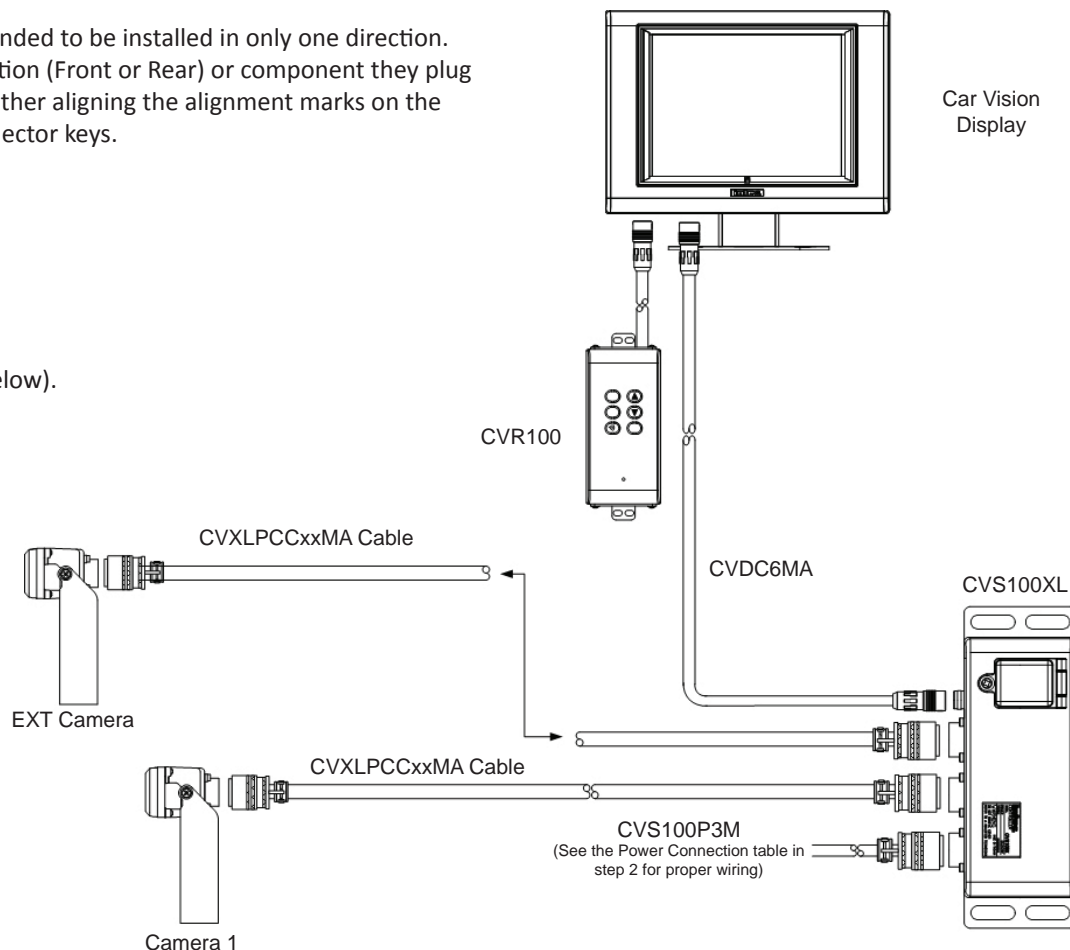
POWER – Use the CVS100P3M to connect the system to vehicle power (see below).

3 Power Connection Table

Color	Function
Red	+11 to +32 VDC
Black	Ground
Blue	+11 to +32 VDC (Camera Trigger)
Green	Radar Alarm Out

4 After installation turn the display on via the ON/SB button. Access the installers menu by pressing the Menu and the Up Arrow button simultaneously.

Turn EXT IN to on by pressing the Up Arrow button.
Press the EXT button to confirm correct operation.



For a more detailed set of installation instructions, please visit www.intecvideo.com/support.html
You may also call us toll free at 800-468-3254 (West) or 800-522-5989 (East) with any questions. Rev F 03/2014